



**ALASKA DIVISION OF HOMELAND SECURITY &  
EMERGENCY MANAGEMENT**  
**SITUATION REPORT 24-089 • March 29, 2024**



Toll-Free 1.800.478.2337

Anchorage Area 907.428.7000

SEOC 907.428.7100

|  |  |   |
|--|--|---|
| <p><b><u>SEOC Preparedness Level</u></b><br/><br/>Level 1 – Routine Operations.</p>                      | <p align="center"><a href="http://ready.alaska.gov">http://ready.alaska.gov</a></p>                                    | <p><b><u>National Terrorism Advisory System:</u></b><br/><br/><a href="#">Read the NTAS Bulletin here</a></p> |
| <p><a href="#">Maritime Security (MARSEC)</a> Level:1-<br/>Minimum Appropriate<br/>Security Measures</p> | <p align="center"><b>WHO Novel Coronavirus<br/>Pandemic (COVID-19):</b><br/><a href="#">2019 Novel Coronavirus</a></p> | <p><b><u>Alaska Military Installation Force<br/>Protection Level:</u></b> FPCON Bravo</p>                     |

(Significant changes from previous situation reports are red.)

**Significant Issues:**

None

**State of Alaska Department of Health (DOH)**

The DOH stands ready to assist with all aspects of public health and, in the event of a public health emergency, is supported by the SEOC and other state departments as required.

For current information, see: <https://health.alaska.gov/dph/Pages/default.aspx>

<https://health.alaska.gov/dph/Emergency/Pages/prepared/default.aspx>

**NTAS Bulletin**

The U.S. Department of Homeland Security issued an updated National Terrorism Advisory Bulletin on May 24, 2023. The current and expired bulletins can be viewed at the below link.

<https://www.dhs.gov/national-terrorism-advisory-system>

**Travel Alerts and Conditions**

For current driving conditions, dial 511 or visit: <https://511.alaska.gov/>

**Barry Arm Landslide / Tsunami Risk**

For the latest information on the Barry Arm Landslide and Tsunami risk, click here:

<https://diggs.alaska.gov/hazards/barry-arm-landslide.html>

**Earthquakes**

United States Geological Service (USGS) Earthquake Information: <http://earthquake.usgs.gov/>

National Tsunami Warning Center: <http://tsunami.gov/>

## Alaska Volcanoes

**Great Sitkin Alert Level: Watch** and Aviation Color Code: **Orange**

**Shishaldin Alert Level: Advisory** and Aviation Color Code: **Yellow**

**Atka Volcanic Complex Alert Level: Advisory** and Aviation Color Code: **Yellow**

For Alaska Volcano updates, go to: <https://www.avo.alaska.edu/>

## Air Quality Index (AQI) Advisories

For the most up-to-date Air Quality Index Advisories:

<http://dec.alaska.gov/Applications/Air/airtoolsweb/Home/Index>

## Spills of Oil and Hazardous Substances

The Alaska Division of Environmental Conservation (ADEC) Spill Prevention and Response page is located at:

<https://dec.alaska.gov/spar/>

## Alaska Cyber Security Information

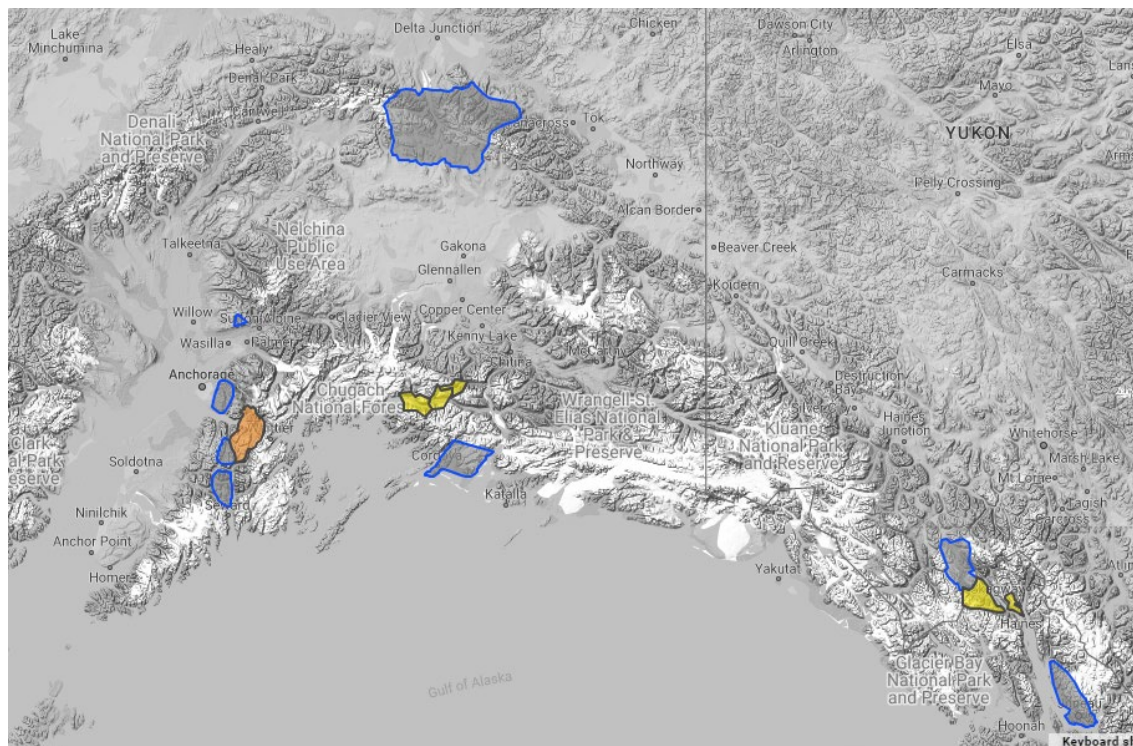
State Employees may sign up for cybersecurity notifications and alerts at

<https://oit.alaska.gov/security>

Cybersecurity and Infrastructure Security Agency (CISA)-Cybersecurity Services and Tools:

[www.cisa.gov/free-cybersecurity-services-and-tools](http://www.cisa.gov/free-cybersecurity-services-and-tools)

## Avalanche Hazard



**Travel in avalanche terrain is not recommended. Avoid being on or beneath all steep slopes.**

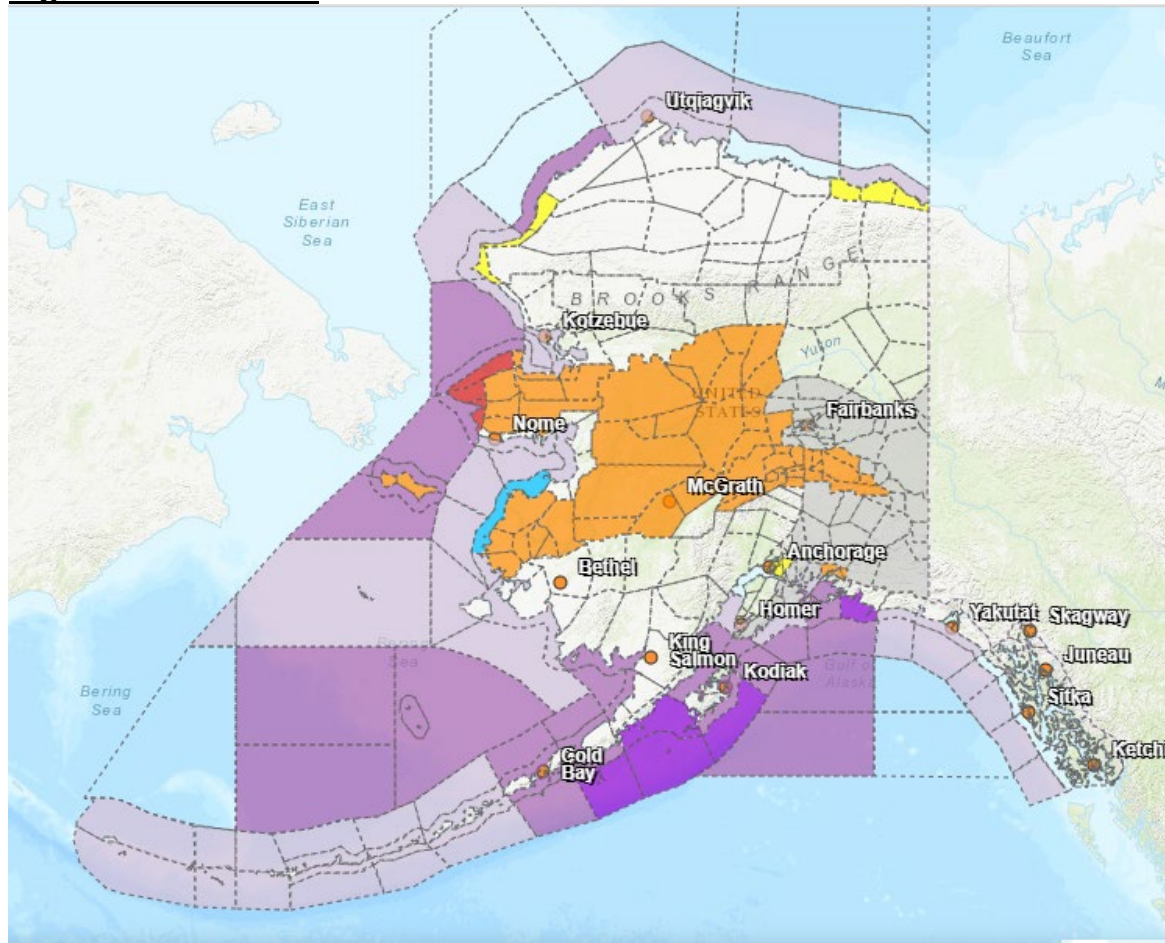
**Turnagain Pass-** Considerable at high elevations, Moderate at mid and low elevations.

**Valdez** – Moderate at high elevations

**Haines** – Moderate at all elevations.

For information and the most current avalanche conditions, go to <https://alaskasnow.org>

## **Significant Weather:**



### **High Wind Watch in effect for:**

- Anchorage from Saturday morning through Sunday morning.

### **Special Weather Statement in effect for:**

- White Mountains and High Terrain South of the Yukon River, Fortymile Country, Upper Tanana Valley, Upper Chena River Valley, Tanana Flats, Eielson AFB and Salcha, Goldstream Valley and Nenana Hills, Chatanika River Valley, Two Rivers, Fairbanks Metro Area, and Nenana for active weather this weekend. Strong winds and blowing snow expected.
- Northeast Prince William Sound through the weekend for snow and blowing snow on Thompson Pass.
- Copper River Basin through the weekend for possible heavy snow.
- Western Prince William Sound through the weekend for strong winds and moderate to heavy snow for Turnagain Pass.
- East Turnagain Arm through the weekend for prolonged strong southeast winds with snow turning to rain.

### **Blizzard Warning in effect for:**

- Shishmaref and Bering Strait Coast from 2am Saturday until 7pm Sunday.

### **Wind Advisory in effect for:**

- Delta Junction, Northern Denali Borough, and Eastern Alaska Range North of Trims Camp until 10am Sunday

### **Winter Weather Advisory in effect for:**

- Yukon Delta Coast, Lower Yukon River, Middle Yukon Valley, Lower Yukon and Innoko Valleys until 6am Saturday.

- Lower Koyukuk Valley from 10pm tonight until 1am Sunday.
- Upper Kuskokwim Valley from 4pm this afternoon until 1am Sunday.
- St. Lawrence Island until noon Sunday.
- Northern Seward Peninsula and Interior Seward Peninsula from 1am Sunday to 7am Monday.
- Southern Denali Borough from 10pm tonight until noon Sunday.
- Upper Koyukuk Valley and Central Interior from 10am Saturday until 4pm Sunday.
- Dalton Highway Summits from 10pm Saturday to 10pm Sunday.
- Eastern Alaska Range South of Trims Camp from 1pm Saturday to 10pm Sunday.
- Northeast Prince William Sound from 10am Saturday to noon Sunday for Thompson Pass.

**Winter Storm Watch in effect for:**

- Eastern Beaufort Sea Coast and Western Arctic Coast from Saturday evening through Sunday morning.

For more information and the most current weather, Watches / Warnings / Advisories go to:

<https://www.weather.gov/arh/>

**The Next Situation Report** will be **April 1, 2024**. A significant change in the situation or the threat level will prompt an interim report. This report is posted on the internet at <https://ready.alaska.gov/sitrep>.

To register for email distribution, go to <http://list.state.ak.us/mailman/listinfo/dhsem.situation.report>. Direct questions regarding this report to the SEOC at 907-428-7100 or [seoc@alaska.gov](mailto:seoc@alaska.gov).